

Table of Contents

1	INTRODUCTION	2
2	MAPS AND COORDINATES.....	3
3	ADVISORY ASSISTANCE FROM COMMISSION MEMBERS.....	3
4	PROVISIONS OF ARTICLE 76 INVOKED	3
5	OUTSTANDING MARITIME DELIMITATIONS.....	4
6	OVERVIEW OF THE SUBMISSION AREA	4
7	MAP AND TABLE NOTES	5
	Figure 1: The outer limit of the continental shelf of the Republic of the Fiji Islands and provisions of Article 76 invoked.	7
	ANNEX 1 – Table of Fixed Points.....	8

1 INTRODUCTION

- 1-1 This Executive Summary forms part of the partial submission by the Republic of the Fiji Islands ('Fiji') to the Commission on the Limits of the Continental Shelf ('the Commission') made pursuant to paragraph 8 of Article 76 of the 1982 United Nations Convention on the Law of the Sea ('the Convention').
- 1-2 This partial submission contains information on the delineation of the outer limits of the continental shelf in the Region of the Lau-Colville and Tonga-Kermadec Complex ('South East Region') beyond 200 nautical miles ('M') from the baselines from which the breadth of the territorial sea of Fiji is measured.
- 1-3 Fiji is a small island nation located in the south-west Pacific Ocean and is a Contracting Party to the Convention. In this regard, Fiji signed and ratified the Convention on the day it was opened for signature on 10 December 1982.
- 1-4 Under Article 4 of Annex II to the Convention, as supplemented by the decisions of the Eleventh and Eighteen Meetings of the States Parties to the Convention respectively, regarding the ten-year period established by Article 4 of Annex II to the Convention (SPLOS/72) and (SPLOS/183), a coastal State for which the Convention entered into force before 13 May 1999 is required to submit particulars of the outer limits of the continental shelf to the Commission, together with supporting scientific and technical data by 13 May 2009. This partial submission by Fiji satisfies that obligation.
- 1-5 Fiji has for the purposes of preparing this submission, applied the relevant provisions of Article 76 of the Convention, together with the Rules of Procedure of the Commission on the Limits of the Continental Shelf (CLCS/40/Rev.1), adopted by the Commission on 17 April 2008 ('Rules of Procedure'), and the recommendations contained in the Scientific and Technical Guidelines of the Commission on the Limits of the Continental Shelf (CLCS/11) adopted by the Commission on 13 May 1999 ('the Guidelines').
- 1-6 Consistent with paragraph 3 of Annex I to the Rules of Procedure, this submission represents a partial submission in respect of only a portion of the continental shelf beyond 200M from the territorial sea baselines claimed by Fiji. Submissions for such other portions of continental shelf beyond 200M shall be made by Fiji at an appropriate time.
- 1-7 In accordance with section I of Annex III to the Rules of Procedure and paragraphs 9.1.3 to 9.1.6 of the Guidelines, the submission consists of the following three parts:
- this Executive Summary (FJI-ES-DOC_Rev);
 - a Main Body (FJI-MB-DOC_Rev); and
 - a part containing all required supporting scientific and technical data (FJI-SD_Rev).
- 1-8 A separate section of this Executive Summary outlines the region of continental shelf beyond 200M covered by the submission, including a depiction of the outer limit of the continental shelf.

2 MAPS AND COORDINATES

- 2-1 Consistent with the requirements of paragraph 9.1.4 of the Guidelines, Figure 1 depicts the outer limit line, as well as the fixed points that define the outer limit line according to the relevant provisions of Article 76 invoked. An A0 map showing the same has also been provided with this Executive Summary.
- 2-2 Further, a list of coordinates of the fixed points that define the outer limit of Fiji's continental shelf beyond 200M as set out in the Main Body of the submission is reproduced in the annex to this Executive Summary. The points are supplied in decimal degrees and in the WGS84 datum. The provision of Article 76 used to define each fixed point, as well as the distance between adjacent points, are also stated in the annex.

3 ADVISORY ASSISTANCE FROM COMMISSION MEMBERS

- 3-1 Fiji has been assisted in the preparation of the submission by:
- Dr. Philip A. Symonds
 - Dr. Karl H.F. Hinz, a former member of the Commission (1997 - 2002).
- 3-2 No advice was provided by any other current or former member of the Commission.

4 PROVISIONS OF ARTICLE 76 INVOKED

- 4-1 Paragraphs 4 to 6 of Article 76 set out the specific formula and constraint provisions by which a coastal State such as Fiji may establish the outer edge of its continental margin and its legal continental shelf in circumstances where the margin extends beyond 200M from the baselines from which the breadth of the territorial sea is measured.
- 4-2 As set out in paragraph 7 of Article 76, the coastal State is to delineate the outer limits of those portions of its continental shelf that extend beyond 200M from the baselines by straight lines not exceeding 60M in length, connecting fixed points ('Article 76 fixed points') defined by coordinates of latitude and longitude.
- 4-3 Fiji invokes paragraphs 3, 4(a) (ii), 5 and 7 of Article 76 of the Convention to delineate the outer limit of the continental shelf described in the submission. The outer limit is summarised in further detail in Section 6 of this Executive Summary.

5 OUTSTANDING MARITIME DELIMITATIONS

- 5-1 Fiji has outstanding delimitations in the area of this partial submission with the Kingdom of Tonga and New Zealand. Fiji's submission is made without prejudice to outstanding delimitations, consistent with Article 76, paragraph 10 and Annex II, Article 9 of UNCLOS.

6 OVERVIEW OF THE SUBMISSION AREA

- 6-1 This partial submission encompasses the Lau-Colville and Tonga-Kermadec Complex ('Complex'). The Complex is part of the South West Pacific island arc system that includes the North Fiji Basin, formed by the subduction of the Pacific Plate under the Indo-Australian Plate. It is the result of successive re-orientations of the subduction system and consequent formation of associated arcs and back arc basins and is morphologically and geologically distinct from the deep ocean floor of the Pacific basin to the North and West.
- 6-2 The eastern-most and youngest part of the Complex consists of the fossil Southern Lau-Colville island arc and active Tonga-Kermadec Ridges. To the west the Colville Ridge is bounded by the South Fiji Basin and to the east the Tonga-Kermadec Ridge is bound by the Tonga-Kermadec Trough and the Pacific Basin.
- 6-3 The 'Summary of the Recommendations of the Commission of the Continental Shelf (CLCS) in regard to the Submission made by New Zealand 16 April 2006' ('New Zealand Recommendations') covers this South East Region and has direct relevance to this partial submission of Fiji. In particular, those parts of the New Zealand Recommendations that apply to the shared area of continental shelf characterised by New Zealand as the Northern Region (paragraphs 37-61 of the New Zealand Recommendations) have been used as the basis of the definition of the continental shelf in this South East Region by Fiji.
- 6-4 In this regard, the Commission states in the New Zealand Recommendations that it has *"accepted that the Kermadec and Colville Ridges form a set of Coalesced ridges with the Kermadec Ridge facing the Pacific Ocean to the east and the Colville Ridge facing the South Fiji basin to the west. The Kermadec Trough is the oceanic subduction zone along the eastern flank of the Kermadec Ridge. The eastern continental slope of the Kermadec Ridge is steep and the base of slope, being the base of the subduction trough, is readily identified on a morphological basis.*
- 6-5 Furthermore, the Commission states in paragraph 58 of the New Zealand Recommendations that *"based on the literature and the evidence in the Submission, the Commission agrees that the Kermadec and Colville Ridge system....are natural components of the continental margin of the North Island of New Zealand and may*

be classified as submarine elevations in the sense of article 76, paragraph 6. Hence the depth constraint line originating from these elevations may be applied....”

- 6-6 It is Fiji’s position that the Fijian islands in general, and particularly the Lau Group of islands which lie upon of the Lau-Coville Ridge, were formed by the processes that gave rise to the Lau-Colville and Tonga-Kermadec Ridges. Accordingly, the Lau-Colville and Tonga-Kermadec ridges must also be classified as submarine elevations in the sense of Article 76, paragraph 6. It is on this basis that Fiji has constructed the depth constraint line originating from these elevations to delineate the outer limit of the continental shelf in the South East Region. Detailed analysis of this view is set out in the Main Body.
- 6-7 The outer limit of the continental shelf of Fiji in the South East Region encompasses an area of approximately 303,500 km² beyond the territorial sea baselines of Fiji, defined by 195 fixed points as follows:
- 1 is a point where the outer limit of the extended continental shelf joins to the line 200M from Fiji’s territorial sea baseline (Article 76, paragraph 1);
 - 52 are defined by arcs 60M from the foot of slope (Article 76, paragraph 4(a)(ii));
 - 138 are defined by arcs 100M from the 2500m isobath (Article 76, paragraph 5 and 6);
 - 1 point is defined by the line 350M from the baselines from which the breadth of the territorial sea is measured (Article 76, paragraph 5);
 - 2 are points where the continental shelf of Fiji intersects the line 200M from New Zealand’s territorial sea baseline; and
 - 1 is a point where the continental margin of Fiji intersects the line 200M from Tonga’s territorial sea baseline.
- 6-8 Each successive pair of fixed points is connected by a straight line not exceeding 60M in length.

7 MAP AND TABLE NOTES

- 7-1 The depiction of 200M lines pertaining to a State other than Fiji is made for the limited purposes of the present submission and demonstrating the location of those fixed points at which the outer limit line delineating the extended continental shelf commences and terminates respectively. The construction of such 200M lines is based on information available at the time of production, and should not be taken to signify acceptance of the validity at international law of base-points, maritime zones or waters determined by another coastal State, with the exception of those cases where maritime boundary lines, coordinates or boundaries have been agreed in a maritime boundary treaty or agreement concluded between Fiji and a neighbouring coastal State.

- 7-2 The list of points delineating the outer limit of Fiji's extended continental shelf in the South East Region is contained in the attached Annex.
- 7-3 The tables included at Annex 1 to this Executive Summary list by number (identifiers) and coordinates (in latitude and longitude) the fixed points that define the outer limits of the continental shelf of Fiji. The distance in nautical miles ('M') from one point on the outer limit line to the next is given in the fourth column of the table.
- 7-4 All coordinates of fixed points defined according to the provisions of Article 76 of the Convention are expressed in this document in the WGS84 geodetic reference system.

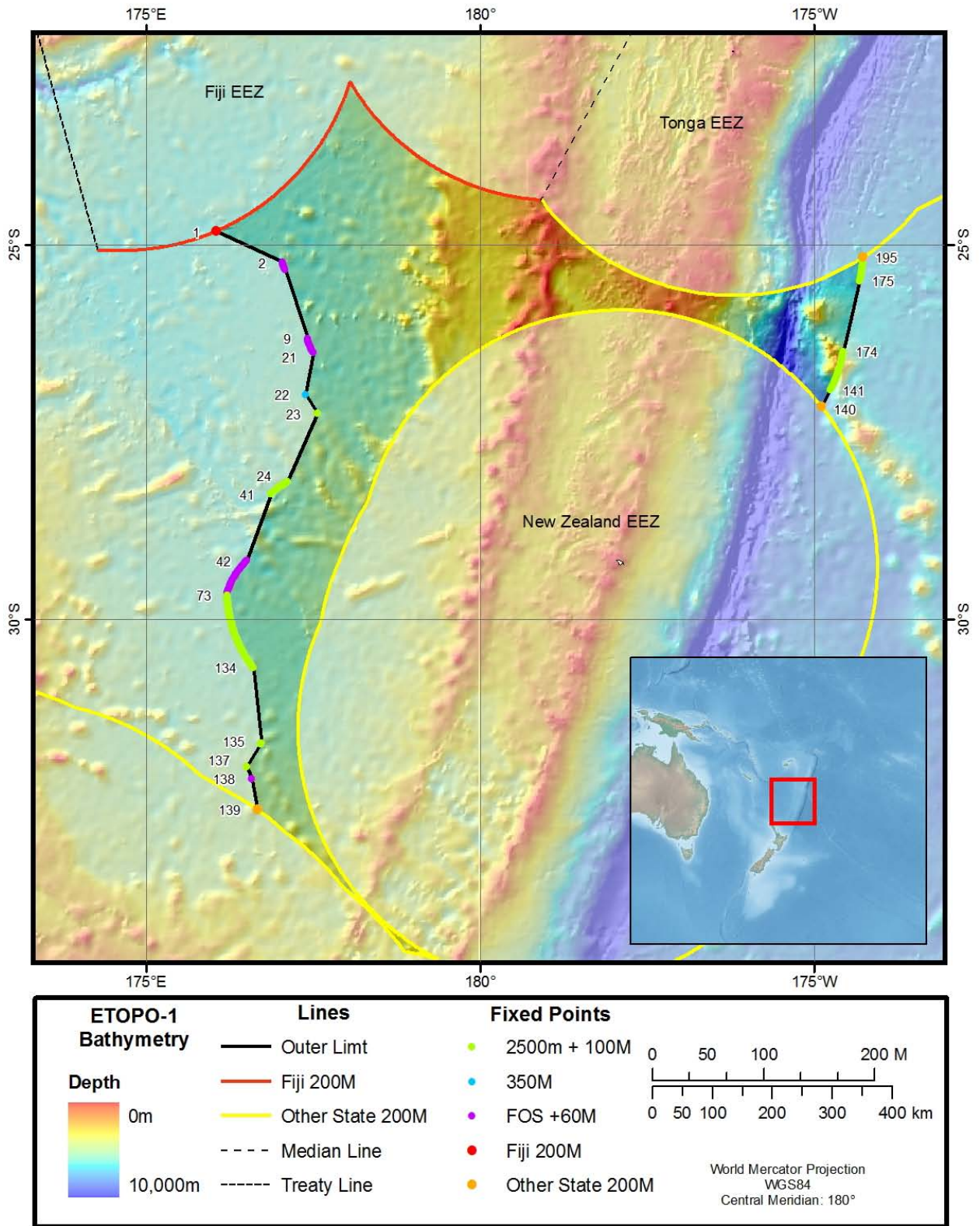


Figure 1: The outer limit of the continental shelf of the Republic of the Fiji Islands and provisions of Article 76 invoked.

ANNEX 1 – Table of Fixed Points

Western Margin				
Fixed Point ('FP') Identifier	Coordinates		Article 76 Provision	Distance to Last FP (M)
	Longitude	Latitude		
FIJI-ECS-1	176.0599518	-24.8167667	Fiji 200M	0.00
FIJI-ECS-2	177.0516815	-25.2371082	FOS + 60M	59.61
FIJI-ECS-3	177.0560455	-25.2533455	FOS + 60M	1.00
FIJI-ECS-4	177.0607147	-25.2695179	FOS + 60M	1.00
FIJI-ECS-5	177.0656891	-25.2856121	FOS + 60M	1.00
FIJI-ECS-6	177.0709534	-25.3016319	FOS + 60M	1.00
FIJI-ECS-7	177.0765228	-25.3175678	FOS + 60M	1.00
FIJI-ECS-8	177.0823669	-25.3334179	FOS + 60M	1.00
FIJI-ECS-9	177.4235992	-26.2711449	FOS + 60M	59.06
FIJI-ECS-10	177.4290771	-26.2871170	FOS + 60M	1.00
FIJI-ECS-11	177.4348450	-26.3030033	FOS + 60M	1.00
FIJI-ECS-12	177.4409027	-26.3188038	FOS + 60M	1.00
FIJI-ECS-13	177.4472504	-26.3345070	FOS + 60M	1.00
FIJI-ECS-14	177.4539032	-26.3501129	FOS + 60M	1.00
FIJI-ECS-15	177.4608307	-26.3656178	FOS + 60M	1.00
FIJI-ECS-16	177.4680634	-26.3810158	FOS + 60M	1.00
FIJI-ECS-17	177.4755707	-26.3963032	FOS + 60M	1.00
FIJI-ECS-18	177.4833679	-26.4114742	FOS + 60M	1.00
FIJI-ECS-19	177.4914398	-26.4265270	FOS + 60M	1.00
FIJI-ECS-20	177.4997864	-26.4414558	FOS + 60M	1.00
FIJI-ECS-21	177.5084229	-26.4562550	FOS + 60M	1.00
FIJI-ECS-22	177.3919678	-27.0223656	350M	34.44
FIJI-ECS-23	177.5697327	-27.2773895	2500m + 100M	17.98
FIJI-ECS-24	177.1264648	-28.1890182	2500m + 100M	59.43
FIJI-ECS-25	177.1104889	-28.1979084	2500m + 100M	1.00
FIJI-ECS-26	177.0946198	-28.2069397	2500m + 100M	1.00
FIJI-ECS-27	177.0788422	-28.2161064	2500m + 100M	1.00
FIJI-ECS-28	177.0631714	-28.2254086	2500m + 100M	1.00
FIJI-ECS-29	177.0476074	-28.2348518	2500m + 100M	1.00
FIJI-ECS-30	177.0321503	-28.2444286	2500m + 100M	1.00
FIJI-ECS-31	177.0167847	-28.2541409	2500m + 100M	1.00
FIJI-ECS-32	177.0015411	-28.2639847	2500m + 100M	1.00
FIJI-ECS-33	176.9863892	-28.2739639	2500m + 100M	1.00
FIJI-ECS-34	176.9713593	-28.2840729	2500m + 100M	1.00
FIJI-ECS-35	176.9564362	-28.2943153	2500m + 100M	1.00
FIJI-ECS-36	176.9416351	-28.3046856	2500m + 100M	1.00
FIJI-ECS-37	176.9269409	-28.3151855	2500m + 100M	1.00
FIJI-ECS-38	176.9123688	-28.3258133	2500m + 100M	1.00

Western Margin				
Fixed Point ('FP') Identifier	Coordinates		Article 76 Provision	Distance to Last FP (M)
	Longitude	Latitude		
FIJI-ECS-39	176.8979187	-28.3365669	2500m + 100M	1.00
FIJI-ECS-40	176.8835754	-28.3474483	2500m + 100M	1.00
FIJI-ECS-41	176.8770142	-28.3525257	2500m + 100M	0.46
FIJI-ECS-42	176.5172424	-29.2285156	FOS + 60M	55.75
FIJI-ECS-43	176.5037842	-29.2403336	FOS + 60M	1.00
FIJI-ECS-44	176.4905396	-29.2523460	FOS + 60M	1.00
FIJI-ECS-45	176.4775238	-29.2645493	FOS + 60M	1.00
FIJI-ECS-46	176.4647369	-29.2769413	FOS + 60M	1.00
FIJI-ECS-47	176.4521790	-29.2895145	FOS + 60M	1.00
FIJI-ECS-48	176.4398651	-29.3022709	FOS + 60M	1.00
FIJI-ECS-49	176.4277954	-29.3152027	FOS + 60M	1.00
FIJI-ECS-50	176.4159698	-29.3283081	FOS + 60M	1.00
FIJI-ECS-51	176.4043884	-29.3415833	FOS + 60M	1.00
FIJI-ECS-52	176.3930664	-29.3550262	FOS + 60M	1.00
FIJI-ECS-53	176.3819885	-29.3686295	FOS + 60M	1.00
FIJI-ECS-54	176.3711700	-29.3823929	FOS + 60M	1.00
FIJI-ECS-55	176.3606110	-29.3963127	FOS + 60M	1.00
FIJI-ECS-56	176.3503265	-29.4103832	FOS + 60M	1.00
FIJI-ECS-57	176.3403015	-29.4245987	FOS + 60M	1.00
FIJI-ECS-58	176.3305359	-29.4389591	FOS + 60M	1.00
FIJI-ECS-59	176.3210602	-29.4534588	FOS + 60M	1.00
FIJI-ECS-60	176.3118439	-29.4680958	FOS + 60M	1.00
FIJI-ECS-61	176.3029022	-29.4828625	FOS + 60M	1.00
FIJI-ECS-62	176.2942505	-29.4977570	FOS + 60M	1.00
FIJI-ECS-63	176.2858887	-29.5127773	FOS + 60M	1.00
FIJI-ECS-64	176.2778015	-29.5279140	FOS + 60M	1.00
FIJI-ECS-65	176.2700043	-29.5431690	FOS + 60M	1.00
FIJI-ECS-66	176.2624969	-29.5585308	FOS + 60M	1.00
FIJI-ECS-67	176.2552795	-29.5740032	FOS + 60M	1.00
FIJI-ECS-68	176.2483521	-29.5895767	FOS + 60M	1.00
FIJI-ECS-69	176.2417297	-29.6052494	FOS + 60M	1.00
FIJI-ECS-70	176.2353973	-29.6210155	FOS + 60M	1.00
FIJI-ECS-71	176.2293701	-29.6368713	FOS + 60M	1.00
FIJI-ECS-72	176.2238617	-29.6521549	FOS + 60M	0.96
FIJI-ECS-73	176.2247925	-29.6807861	2500m + 100M	1.71
FIJI-ECS-74	176.2256012	-29.6974792	2500m + 100M	1.00
FIJI-ECS-75	176.2266083	-29.7141647	2500m + 100M	1.00
FIJI-ECS-76	176.2277985	-29.7308388	2500m + 100M	1.00
FIJI-ECS-77	176.2291870	-29.7475033	2500m + 100M	1.00
FIJI-ECS-78	176.2307587	-29.7641563	2500m + 100M	1.00
FIJI-ECS-79	176.2325287	-29.7807903	2500m + 100M	1.00

Western Margin				
Fixed Point ('FP') Identifier	Coordinates		Article 76 Provision	Distance to Last FP (M)
	Longitude	Latitude		
FIJI-ECS-80	176.2344818	-29.7974091	2500m + 100M	1.00
FIJI-ECS-81	176.2366333	-29.8140125	2500m + 100M	1.00
FIJI-ECS-82	176.2389679	-29.8305931	2500m + 100M	1.00
FIJI-ECS-83	176.2415009	-29.8471546	2500m + 100M	1.00
FIJI-ECS-84	176.2442322	-29.8636932	2500m + 100M	1.00
FIJI-ECS-85	176.2471466	-29.8802071	2500m + 100M	1.00
FIJI-ECS-86	176.2502441	-29.8966942	2500m + 100M	1.00
FIJI-ECS-87	176.2535400	-29.9131527	2500m + 100M	1.00
FIJI-ECS-88	176.2570190	-29.9295826	2500m + 100M	1.00
FIJI-ECS-89	176.2606964	-29.9459782	2500m + 100M	1.00
FIJI-ECS-90	176.2645569	-29.9623432	2500m + 100M	1.00
FIJI-ECS-91	176.2686005	-29.9786758	2500m + 100M	1.00
FIJI-ECS-92	176.2728424	-29.9949703	2500m + 100M	1.00
FIJI-ECS-93	176.2772675	-30.0112267	2500m + 100M	1.00
FIJI-ECS-94	176.2818909	-30.0274448	2500m + 100M	1.00
FIJI-ECS-95	176.2866821	-30.0436192	2500m + 100M	1.00
FIJI-ECS-96	176.2916870	-30.0597534	2500m + 100M	1.00
FIJI-ECS-97	176.2968597	-30.0758419	2500m + 100M	1.00
FIJI-ECS-98	176.3022156	-30.0918827	2500m + 100M	1.00
FIJI-ECS-99	176.3077698	-30.1078777	2500m + 100M	1.00
FIJI-ECS-100	176.3135071	-30.1238232	2500m + 100M	1.00
FIJI-ECS-101	176.3194275	-30.1397171	2500m + 100M	1.00
FIJI-ECS-102	176.3255310	-30.1555576	2500m + 100M	1.00
FIJI-ECS-103	176.3318176	-30.1713448	2500m + 100M	1.00
FIJI-ECS-104	176.3382874	-30.1870766	2500m + 100M	1.00
FIJI-ECS-105	176.3449402	-30.2027512	2500m + 100M	1.00
FIJI-ECS-106	176.3517761	-30.2183685	2500m + 100M	1.00
FIJI-ECS-107	176.3587952	-30.2339230	2500m + 100M	1.00
FIJI-ECS-108	176.3659973	-30.2494164	2500m + 100M	1.00
FIJI-ECS-109	176.3733826	-30.2648468	2500m + 100M	1.00
FIJI-ECS-110	176.3809357	-30.2802105	2500m + 100M	1.00
FIJI-ECS-111	176.3886719	-30.2955074	2500m + 100M	1.00
FIJI-ECS-112	176.3965912	-30.3107357	2500m + 100M	1.00
FIJI-ECS-113	176.4046783	-30.3258953	2500m + 100M	1.00
FIJI-ECS-114	176.4129486	-30.3409805	2500m + 100M	1.00
FIJI-ECS-115	176.4214020	-30.3559952	2500m + 100M	1.00
FIJI-ECS-116	176.4300232	-30.3709354	2500m + 100M	1.00
FIJI-ECS-117	176.4388275	-30.3857994	2500m + 100M	1.00
FIJI-ECS-118	176.4477844	-30.4005852	2500m + 100M	1.00
FIJI-ECS-119	176.4569397	-30.4152908	2500m + 100M	1.00
FIJI-ECS-120	176.4662476	-30.4299183	2500m + 100M	1.00

Western Margin				
Fixed Point ('FP') Identifier	Coordinates		Article 76 Provision	Distance to Last FP (M)
	Longitude	Latitude		
FIJI-ECS-121	176.4757385	-30.4444618	2500m + 100M	1.00
FIJI-ECS-122	176.4853973	-30.4589214	2500m + 100M	1.00
FIJI-ECS-123	176.4952087	-30.4732952	2500m + 100M	1.00
FIJI-ECS-124	176.5052032	-30.4875832	2500m + 100M	1.00
FIJI-ECS-125	176.5153656	-30.5017853	2500m + 100M	1.00
FIJI-ECS-126	176.5256958	-30.5158958	2500m + 100M	1.00
FIJI-ECS-127	176.5361938	-30.5299149	2500m + 100M	1.00
FIJI-ECS-128	176.5468445	-30.5438423	2500m + 100M	1.00
FIJI-ECS-129	176.5576630	-30.5576782	2500m + 100M	1.00
FIJI-ECS-130	176.5686493	-30.5714169	2500m + 100M	1.00
FIJI-ECS-131	176.5798035	-30.5850563	2500m + 100M	1.00
FIJI-ECS-132	176.5910950	-30.5986004	2500m + 100M	1.00
FIJI-ECS-133	176.6025696	-30.6120453	2500m + 100M	1.00
FIJI-ECS-134	176.6141815	-30.6253891	2500m + 100M	1.00
FIJI-ECS-135	176.7349396	-31.5953503	2500m + 100M	58.40
FIJI-ECS-136	176.7272949	-31.6107197	2500m + 100M	1.00
FIJI-ECS-137	176.5130463	-31.9053764	2500m + 100M	20.77
FIJI-ECS-138	176.5917664	-32.0529671	FOS + 60M	9.71
FIJI-ECS-139	176.6692657	-32.4474030	NZ 200M	23.94

Eastern Margin				
Fixed Point ('FP') Identifier	Coordinates		Article 76 Provision	Distance to Last FP (M)
	Longitude	Latitude		
FIJI-ECS-140	-174.8813324	-27.1873703	NZ 200M	0.22
FIJI-ECS-141	-174.7433929	-26.9649296	2500m + 100M	15.22
FIJI-ECS-142	-174.7347412	-26.9501171	2500m + 100M	1.00
FIJI-ECS-143	-174.7262726	-26.9352264	2500m + 100M	1.00
FIJI-ECS-144	-174.7179718	-26.9202614	2500m + 100M	1.00
FIJI-ECS-145	-174.7098389	-26.9052200	2500m + 100M	1.00
FIJI-ECS-146	-174.7018738	-26.8901081	2500m + 100M	1.00
FIJI-ECS-147	-174.6940918	-26.8749237	2500m + 100M	1.00
FIJI-ECS-148	-174.6864624	-26.8596706	2500m + 100M	1.00
FIJI-ECS-149	-174.6790161	-26.8443489	2500m + 100M	1.00
FIJI-ECS-150	-174.6717377	-26.8289623	2500m + 100M	1.00
FIJI-ECS-151	-174.6646423	-26.8135090	2500m + 100M	1.00
FIJI-ECS-152	-174.6577148	-26.7979908	2500m + 100M	1.00
FIJI-ECS-153	-174.6509705	-26.7824135	2500m + 100M	1.00
FIJI-ECS-154	-174.6443939	-26.7667751	2500m + 100M	1.00
FIJI-ECS-155	-174.6379852	-26.7510796	2500m + 100M	1.00

Eastern Margin				
Fixed Point ('FP') Identifier	Coordinates		Article 76 Provision	Distance to Last FP (M)
	Longitude	Latitude		
FIJI-ECS-156	-174.6317596	-26.7353268	2500m + 100M	1.00
FIJI-ECS-157	-174.6257172	-26.7195187	2500m + 100M	1.00
FIJI-ECS-158	-174.6198578	-26.7036552	2500m + 100M	1.00
FIJI-ECS-159	-174.6141663	-26.6877403	2500m + 100M	1.00
FIJI-ECS-160	-174.6086578	-26.6717739	2500m + 100M	1.00
FIJI-ECS-161	-174.6033325	-26.6557598	2500m + 100M	1.00
FIJI-ECS-162	-174.5981750	-26.6396980	2500m + 100M	1.00
FIJI-ECS-163	-174.5932007	-26.6235924	2500m + 100M	1.00
FIJI-ECS-164	-174.5884094	-26.6074409	2500m + 100M	1.00
FIJI-ECS-165	-174.5838013	-26.5912476	2500m + 100M	1.00
FIJI-ECS-166	-174.5793762	-26.5750141	2500m + 100M	1.00
FIJI-ECS-167	-174.5751343	-26.5587406	2500m + 100M	1.00
FIJI-ECS-168	-174.5710754	-26.5424309	2500m + 100M	1.00
FIJI-ECS-169	-174.5671997	-26.5260849	2500m + 100M	1.00
FIJI-ECS-170	-174.5634918	-26.5097027	2500m + 100M	1.00
FIJI-ECS-171	-174.5599823	-26.4932899	2500m + 100M	1.00
FIJI-ECS-172	-174.5566559	-26.4768448	2500m + 100M	1.00
FIJI-ECS-173	-174.5535126	-26.4603710	2500m + 100M	1.00
FIJI-ECS-174	-174.5505524	-26.4438705	2500m + 100M	1.00
FIJI-ECS-175	-174.3027802	-25.4872494	2500m + 100M	58.77
FIJI-ECS-176	-174.2986298	-25.4709606	2500m + 100M	1.00
FIJI-ECS-177	-174.2946625	-25.4546394	2500m + 100M	1.00
FIJI-ECS-178	-174.2908630	-25.4382763	2500m + 100M	1.00
FIJI-ECS-179	-174.2872620	-25.4218826	2500m + 100M	1.00
FIJI-ECS-180	-174.2838440	-25.4054585	2500m + 100M	1.00
FIJI-ECS-181	-174.2805939	-25.3890038	2500m + 100M	1.00
FIJI-ECS-182	-174.2775269	-25.3725166	2500m + 100M	1.00
FIJI-ECS-183	-174.2746582	-25.3560047	2500m + 100M	1.00
FIJI-ECS-184	-174.2719574	-25.3394699	2500m + 100M	1.00
FIJI-ECS-185	-174.2694397	-25.3229084	2500m + 100M	1.00
FIJI-ECS-186	-174.2671051	-25.3063278	2500m + 100M	1.00
FIJI-ECS-187	-174.2649536	-25.2897224	2500m + 100M	1.00
FIJI-ECS-188	-174.2630005	-25.2730999	2500m + 100M	1.00
FIJI-ECS-189	-174.2612152	-25.2564602	2500m + 100M	1.00
FIJI-ECS-190	-174.2596130	-25.2398033	2500m + 100M	1.00
FIJI-ECS-191	-174.2581940	-25.2231350	2500m + 100M	1.00
FIJI-ECS-192	-174.2569733	-25.2064533	2500m + 100M	1.00
FIJI-ECS-193	-174.2559204	-25.1897621	2500m + 100M	1.00
FIJI-ECS-194	-174.2550507	-25.1730633	2500m + 100M	1.00
FIJI-ECS-195	-174.2547302	-25.1650505	Tonga 200M	0.48